



ENTRÉ™
ACCESS & SECURITY MANAGEMENT



A NEW VIEW OF SECURITY

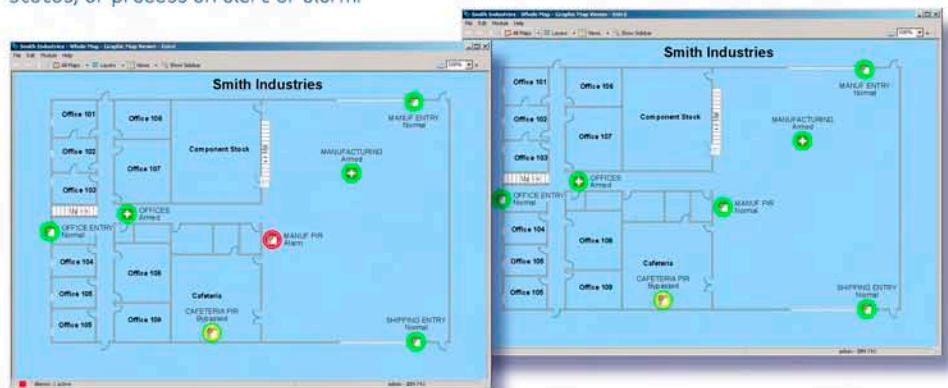


ENTRÉ™
ACCESS & SECURITY MANAGEMENT

AT-A-GLANCE SECURITY

Graphical user interfaces are changing the way we interact with technology. Users appreciate the at-a-glance simplicity offered by graphics-based interfaces. Now you can have simplicity and ease of use with every aspect of your access control and security system.

Instead of viewing system status information and messages only as text and tables, system managers can see an actual picture of the system. From the graphic display of your facility, drill down to any zone, area, or room. Each device ... sensors, readers, etc. ... is represented as an icon on the screen. Point and click on any device to control and change its operating parameters, check its status, or process an alert or alarm.



A SINGLE, UNIFIED SOLUTION FOR ALL SYSTEMS

You can now combine management and control of all related access and security systems under a single software application. Entré is database and hardware independent, so you can bring various systems and multiple panels together for the first time, giving a consolidated view of the system. As a single, unified system, there's one badge, one face, or one fingerprint, worldwide.

The easy-to-use interface makes for simple system configuration and user rights management. Entré gives you control over all security management activities and functions from a single, high-functioning platform. As a network application, it enables management of all facilities wherever they're located, from anywhere that you can connect to the Internet.

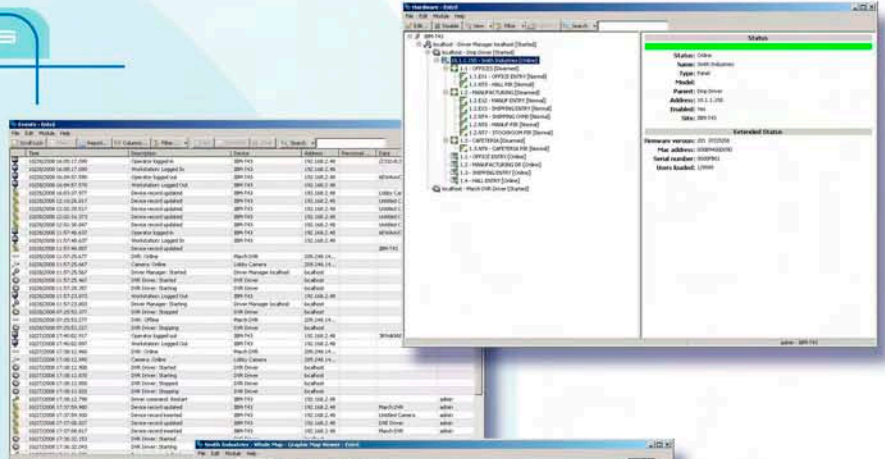
CONVENIENT USER LOADING AND MANAGEMENT

Much of the information about system users probably already exists in other databases. There's no need to reload any of that data, because you can import it into Entré via standard comma-separated value (CSV) format files. In addition to the standard data fields, create up to 20 fully customizable data fields to meet your unique needs.

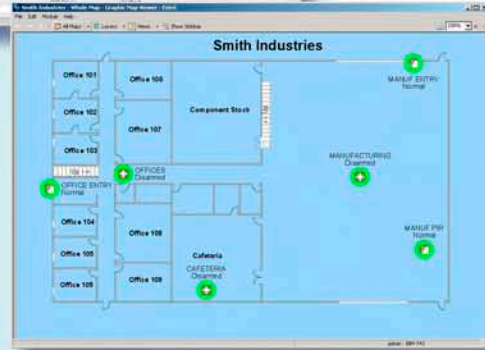
To facilitate user management, you can assign each user to one or more groups. Define specific rights and access permissions to each group, and you've greatly simplified processing of new users. Establish the effective dates and times for user rights, limiting access to only certain times of the day, only certain days, or for only a defined period of time. The possible customization is virtually unlimited.

MULTIPLE VIEWING OPTIONS

To address the preferences of different system users, Entré offers a variety of ways to view your system. Choose Event View to see a traditional tabular column list of events, with the most current events at the top of the list. Choose Tree View to see a hierarchical view. The protected location(s) is shown at the top, and broken down below by facilities, area/zones, and rooms. Click on any level to expand it and drill down.

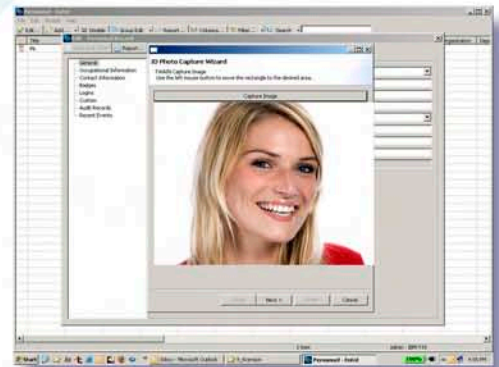


The full benefit of Entré is most evident in Map View. With the optional graphics module, Map View displays an actual illustration or graphic of the protected area, with each device represented by an icon. Start with a view of the entire facility, then click on any area to drill down to the desired level of detail. Click on any device to view or manage its status. In any view, click on an event or device to access additional information and process any alerts or alarms.



TOTAL IMAGE MANAGEMENT

Optional Entré modules allow you to bring control of various visual inputs under the control of your security management software. The DVR/NVR module allows you to access and review recorded images. The CCTV Switcher module gives you control over an analog switcher. The Badge Image Capture module lets you capture, edit, and transfer images directly from a camera or TWAIN source for badging. All of this control is provided from within the Entré application.



ADDITIONAL OPTIONS

DATABASE PARTITIONING:

While Entré stores all data in a single unified database, you can limit users to only certain areas of the database. Partition data by location, type, or other parameters. This is a valuable feature for commercial building landlords who want to provide each tenant with control of only their part of the building.

AUTOMATION MODULE:

Advanced users have the power to create automated system actions and responses to any system alarm or events. You can also create scheduled system actions, either run-once or recurring at defined times and dates.

MULTI-LANGUAGE:

Entré supports English, French, and Spanish, selectable when the operator logs on. Dual-language Mode presents both English and a selected second language.

SOLUTIONS FOR ALL SYSTEMS

There's an Entré system sized for every access control and security system application.

LITE: Includes 16 doors of access (maximum) and 10,000 users, up to four XR500 Series panels, with badging function, full reports and event management.

BUSINESS: With the same features as Entré Lite, but expandable to 96 doors and 24 XR500 Series panels.

ENTERPRISE: With all the features of Entré Business, but includes 96 doors expandable to an unlimited number of doors, panels and users.



Digital Monitoring Products
quality. integrity. innovation.

For an authorized dealer near you
contact DMP at 800-641-4282
www.dmp.com

For full disclosure on DMP products and
approval listings: www.dmp.com

LT-1022